

582  
Maring

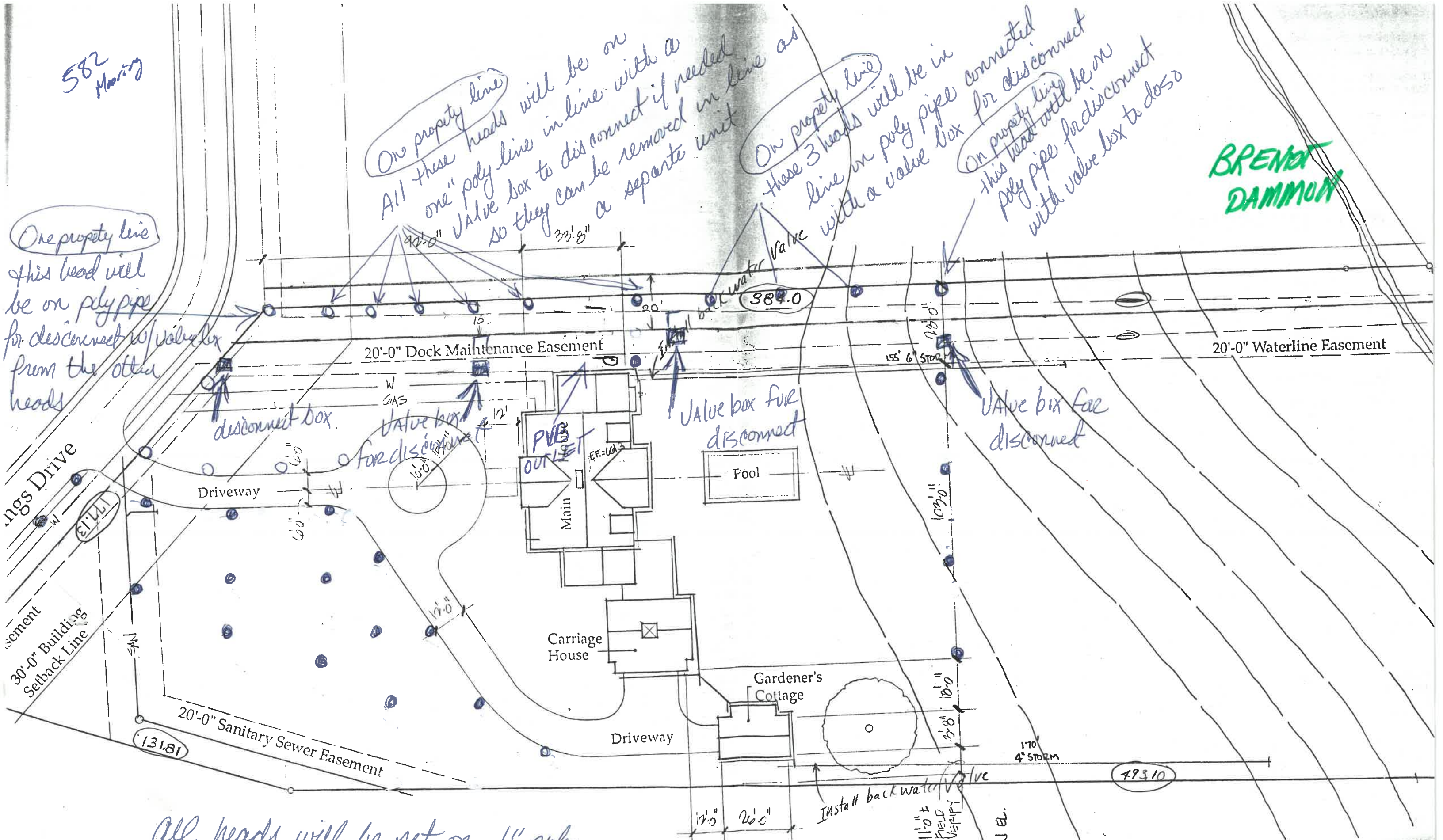
BRENT  
DAMMON

One property line  
this head will  
be on poly pipe  
for disconnect w/ valve box  
from the other  
heads

On property line  
All these heads will be on  
one" poly line in line with a  
90" valve box to disconnect if needed  
so they can be removed in line as  
a separate unit

On property line  
these 3 heads will be in  
line on poly pipe with a valve box  
connected  
for disconnect

On property line  
this head will be on  
poly pipe for disconnect  
with valve box to do so



All heads will be set on 1" poly  
flexable pipe with the ability to be cut, removed,  
re-spliced and re-installed